

The Cambridge BioResource NEWSLETTER

Version1 May 2008



NHS
National Institute for
Health Research

Cambridge Biomedical Research Centre



Blood and Transplant

A very **BIG WELCOME** to all Cambridge BioResource (CBR) volunteers!

We hope you like our new colourful logo?

This is to reflect that we have recently joined forces with the National Health Service Blood and Transplant Centre (NHSBT), based in Cambridge, to increase the size of the volunteer panel. Through our joint efforts we are aiming to exceed 10,000 volunteers in the Cambridge BioResource!

Thanks to all of you for your support, our current numbers stand at over 5000!

Since joining forces with the NHSBT we are increasing the amount of data that we collect on our volunteers by way of a questionnaire that all of our new BioResource recruits will be invited to complete, to include some information on lifestyle and some general health questions. Some of this information will form part of the recruitment criteria used for upcoming research studies. Enclosed with this newsletter is a copy of the questionnaire. We would now like to invite you as a current member of the BioResource to complete this questionnaire and return it to us in the freepost envelope provided.

Recruitment is still on-going so if you have family, friends or colleagues who are interested in taking part in research studies and who would like to join the Cambridge BioResource, our friendly study team would be delighted to hear from them.



Left: Maureen Wiesner, Cambridge BioResource Nurse, can be contacted on **01223 763214**

or maureen.wiesner@cimr.cam.ac.uk

Heather Lloyd-Jones, NHSBT BioResource Research Nurse, can be contacted on **01223 548119** or

h1345@cam.ac.uk

Centre: Sarah Nutland, Cambridge BioResource Study Coordinator, can be contacted on **01223 763223**

or sarah.nutland@cimr.cam.ac.uk

Right: Kelly Hodge, Cambridge BioResource Nurse, can be contacted on **01223 763214**

or kelly.hodge@cimr.cam.ac.uk

Rachel Walker, Cambridge BioResource Research Assistant, can be contacted on **01223 769215**

or rachel.walker@cimr.cam.ac.uk

Alternatively please contact the CBR study team on **01223 769215**, bioresource@cimr.cam.ac.uk

If you think CBR is something your work place, college or organisation would like to support please contact us and we will be happy to come along with our recruitment stand.

RESEARCH STUDIES

**We are continuing to invite panel volunteers to our research studies.
We are currently recruiting to:**



"Genes and Mechanisms in Type 1 Diabetes in the Cambridge BioResource"

led by Professor John Todd at the University of Cambridge. The purpose of this study is to determine the functions of the genes that cause type 1 diabetes, and better understand its basic causes. This study involves donating a single small blood sample at a time and location convenient to you.

For further information about this research go to
<http://www-gene.cimr.cam.ac.uk/todd/>

Diabetic testing their blood sugar

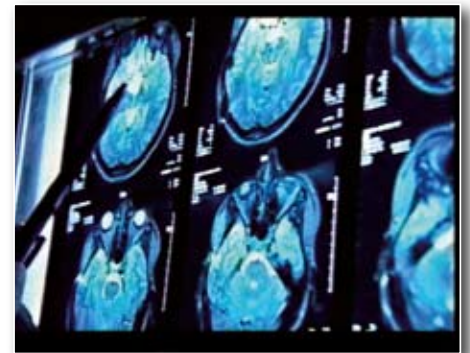
Prof John Todd



"Genetic factors affecting the neural coding of emotional signals in humans"

led by Dr Andy Calder at the MRC Cognition and Brain Sciences Unit. This study aims to use functional magnetic resonance imaging (fMRI) to provide greater detail about the regions of the brain associated with specific individual emotions in the brain associated with specific individual emotions in an attempt to improve our understanding of the way in which our brains process emotional information. Participation in this study will involve performing a variety of tasks both inside and outside the MRI machine such as looking at photos of facial expression or listening to sounds.

For further information about this research go to
<http://www.mrc-cbu.cam.ac.uk/research/emotion/>



MRI images of the brain



A volunteer undergoing an experimental measurement

"Phenotypes linked to common weight gain/diabetes genetic variants" led by Drs Savage, Farooqi, O'Rahilly, Wareham and Finucane at the University of Cambridge. The aim of this study is to improve our understanding of how genetic variants alter body weight regulation and diabetes risk. The study involves a 3-day visit to the Clinical Research Facility at Addenbrooke's Hospital. Specifically it will involve measuring how much you eat and how much energy your body uses up, under carefully controlled conditions, in order to try to identify more effective ways of preventing weight gain and reducing the incidence of diabetes.

For further information about this research go to
<http://www.wtcrf.cam.ac.uk/Facilities.htm>

Dr David Savage



"An fMRI study of frontal lobe function in attention" led by Dr Adrian Owen at the MRC Cognition and Brain Sciences Unit. This study aims to use functional magnetic resonance imaging (fMRI) to provide a better understanding of the processes by which we control the focus of our behaviour, in an attempt to find more effective methods for the treatment of conditions such as Parkinsons or OCD. Recruitment to this study is focussing on healthy volunteers over 55 years of age and participation in this study will involve looking at images and patterns displayed in the MRI machine via a projector screen.

For further information about this research go to
<http://www.mrc-cbu.cam.ac.uk/~adrian/Site/Research.html>



A volunteer in the MRI machine

Getting involved in research studies

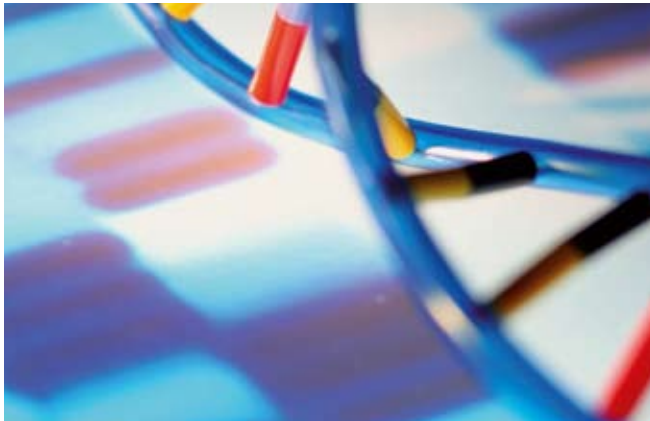
Volunteers satisfying the recruitment criteria for a particular research study will be invited to participate.

If you are invited to join a research study you will be sent full details of the study and what is expected of you before you decide whether or not you would like to participate. Individual research studies will vary in

terms of their time commitment and interventions and it's up to you to decide which studies are right for you.

For more information about the Cambridge BioResource or any of the research studies, please visit our website:

www.cambridgebioresource.org.uk



DNA: This is made up of short sections called genes and these are one of the pieces of information that researchers may use to choose people for particular studies.



An example of one of the study packs we send out to volunteers, including invitation letter, participation form, questionnaire and information sheets.

HAVE YOUR SAY

WE ARE KEEN TO HEAR YOUR IDEAS AND VIEWS ON THE BIORESOURCE and are planning a CBR "Meet and Greet" event, to give you a chance to meet other panel volunteers and the local researchers to ask questions and find out more about both the current and upcoming research studies.

We are also looking to recruit a CBR representative from amongst our volunteers to be a link between the volunteers, study team and the researchers. If you think you would be interested, please get in touch!

Please contact the CBR study team by phone on **01223 769215**,
Or by email at **bioresource@cimr.cam.ac.uk**

Please note we recently relocated offices so our contact address and study telephone number have now changed.

Our new telephone number is **01223 769215** and our new contact address is:

**The Cambridge BioResource
Box 285
c/o Department of Clinical Genetics
Level 6, Addenbrooke's Treatment Centre
Addenbrooke's Hospital
Hills Road
CAMBRIDGE CB2 0QQ**



To acknowledge receipt of this newsletter and your continued support of the BioResource we would be very grateful if you could complete and return this slip to us along with your completed questionnaire in the enclosed FREEPOST envelope.

Name

Any previous names

Tel (daytime)

Tel (evening)

Mobile

Address

Postcode

Email

Please be sure to let us know if your contact details change so we can update our database and keep in touch with you about exciting new developments as they occur.

I would/ would not* be interested in attending a "Meet and Greet" event for CBR volunteers.

**Please delete as appropriate:*

Please indicate which of the following events you would like to attend:

- ☐ An evening meal with researchers and other panel volunteers at a Cambridge college.
N.B. This event would be for a limited number of volunteers only, selected at random from the volunteer database.
- ☐ A lecture given by a local researcher.
N.B. This event would be open to all volunteers
- ☐ A CBR 'Open day' including talks from researchers and information stands about upcoming research studies recruiting from the panel.
N.B. This event would be open to all volunteers

Thank you for your continued support!

Please tear here

